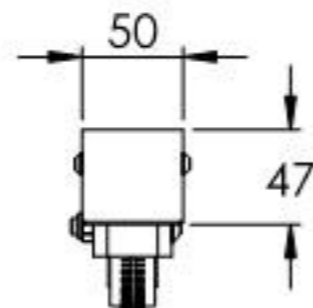
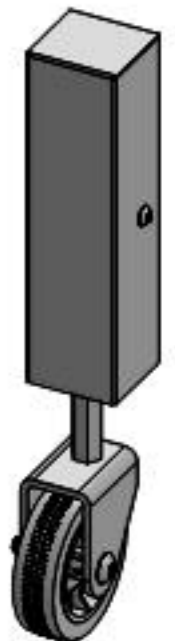
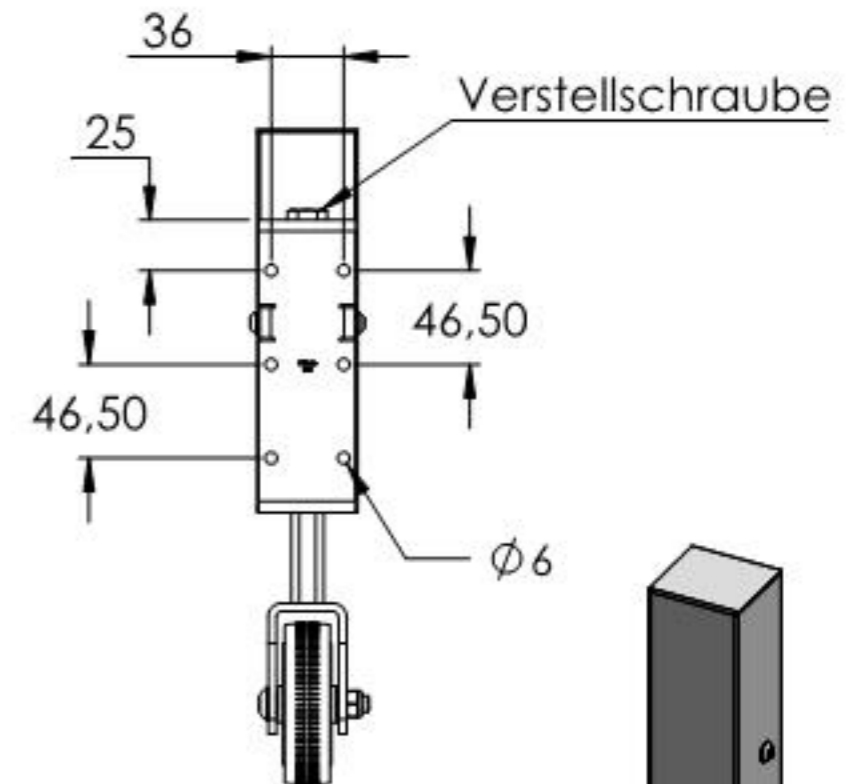
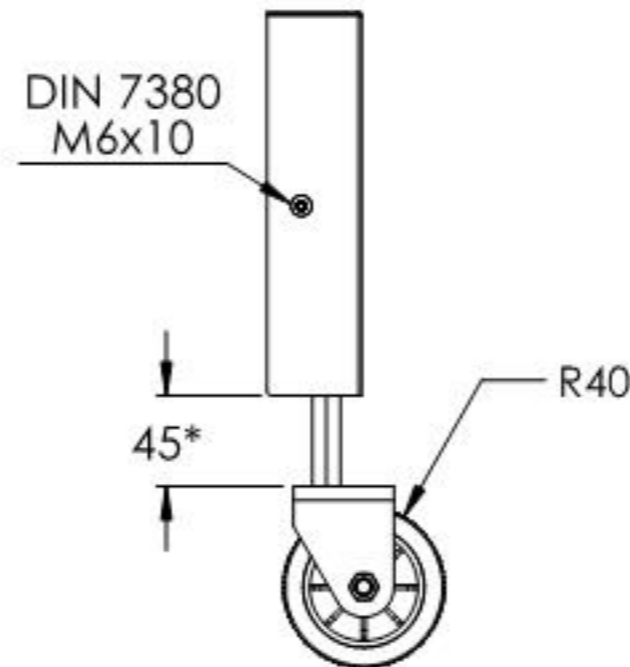
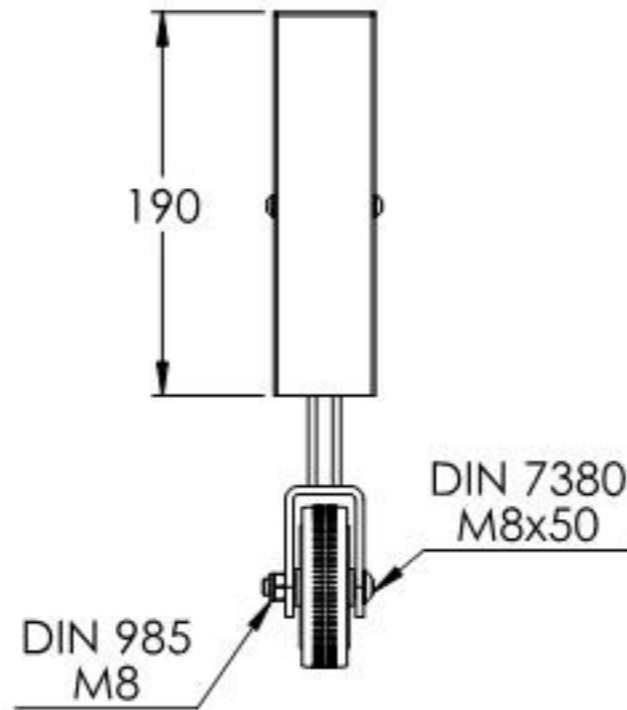
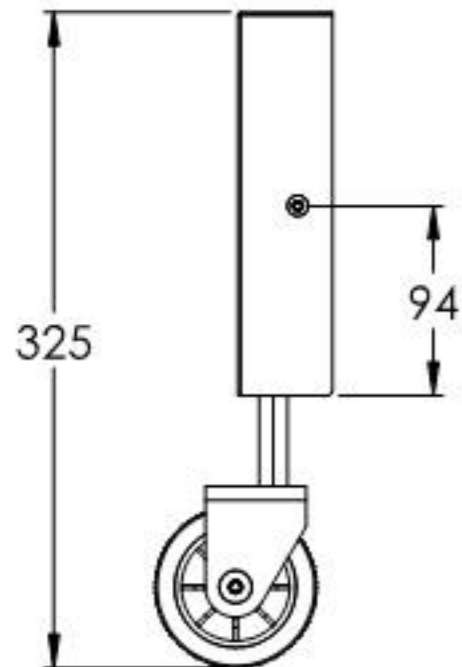
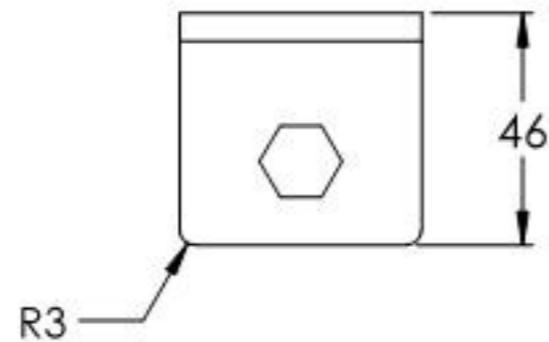
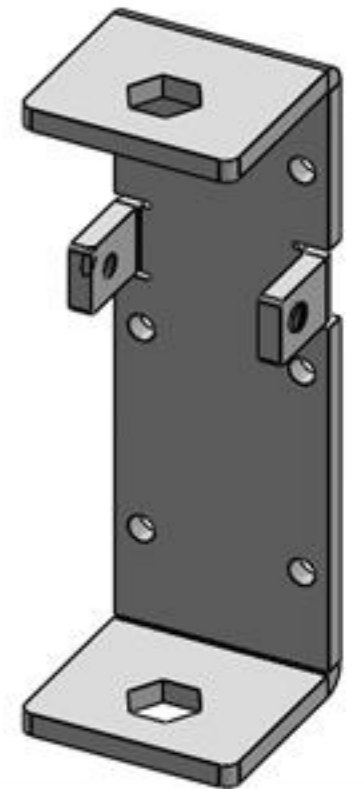
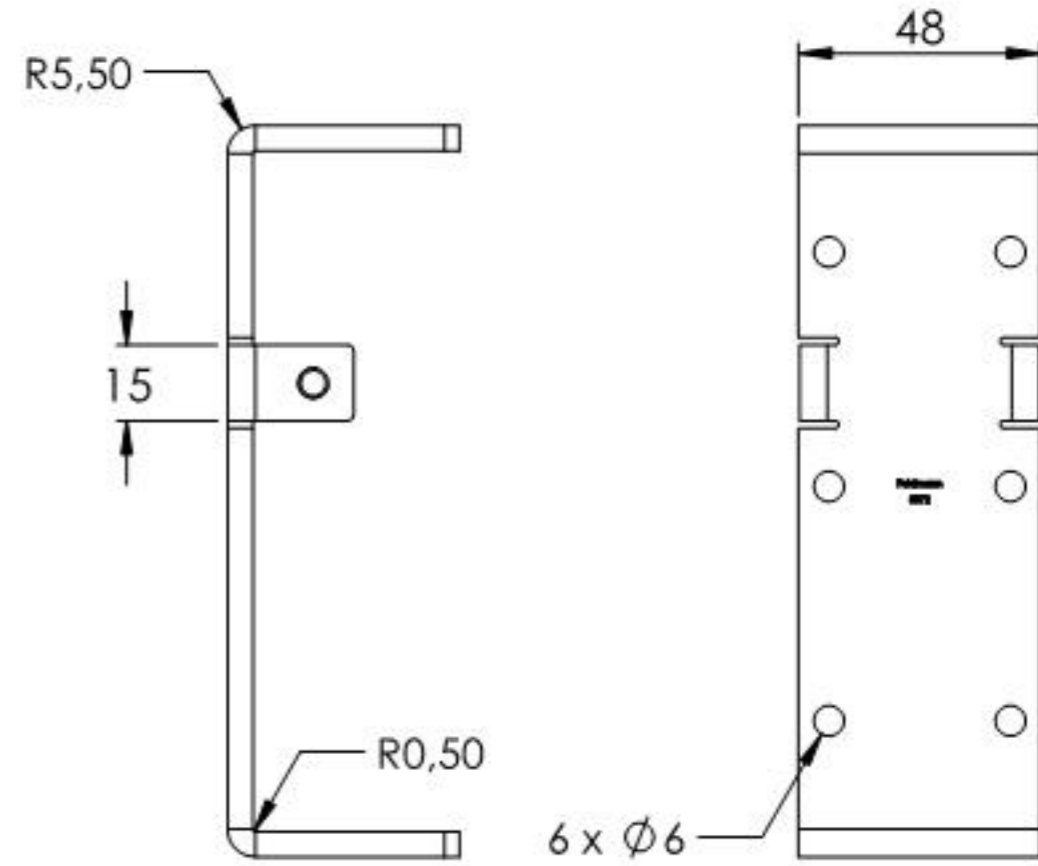
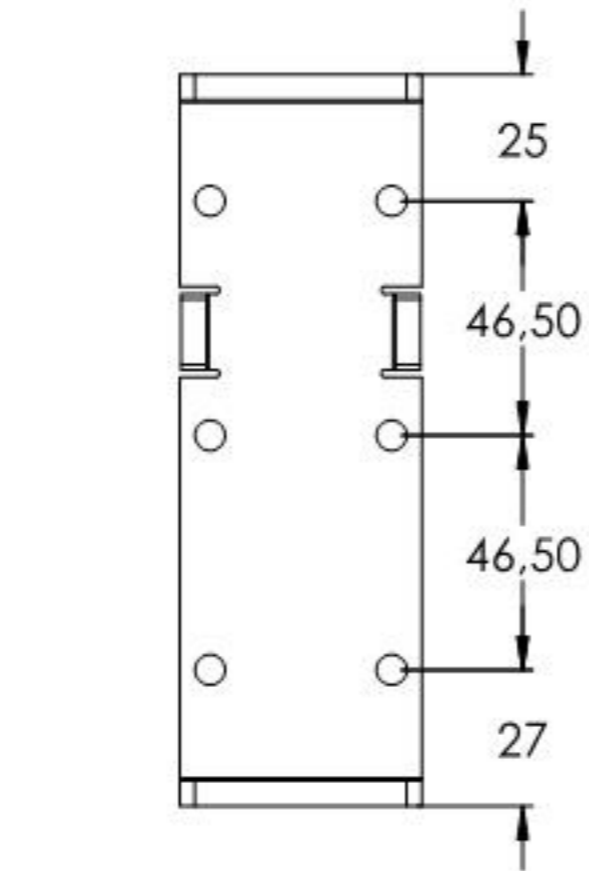
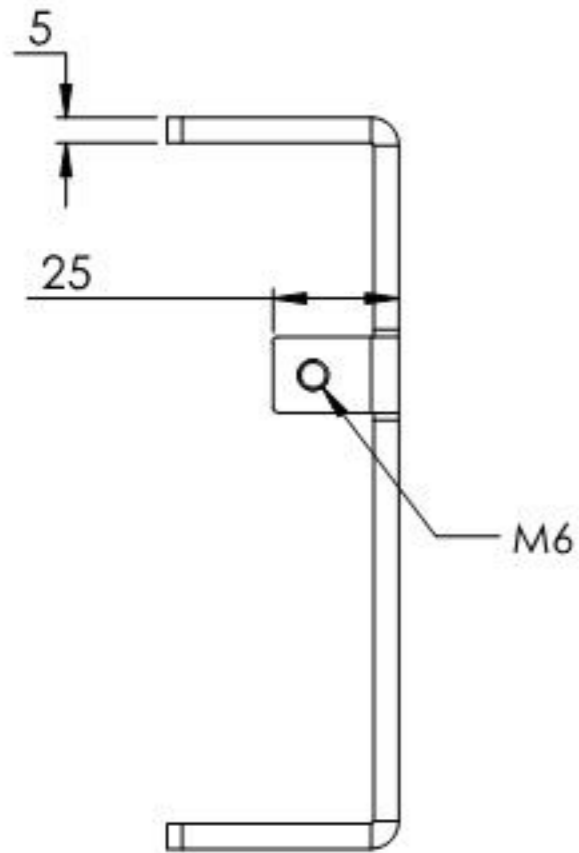
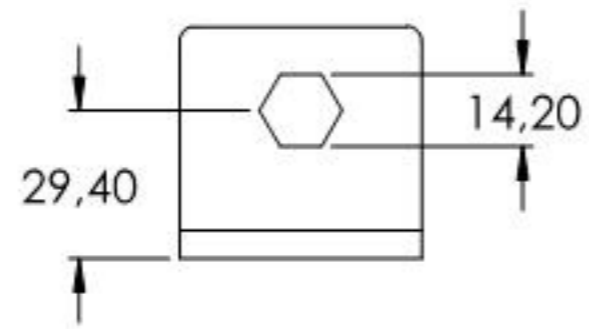


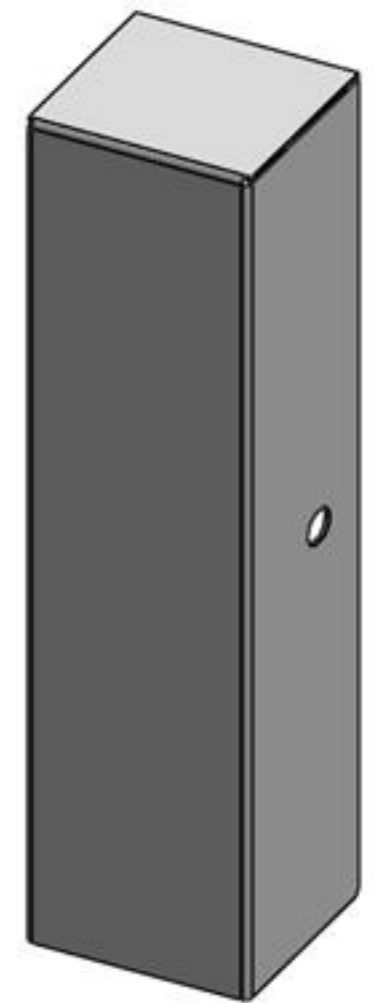
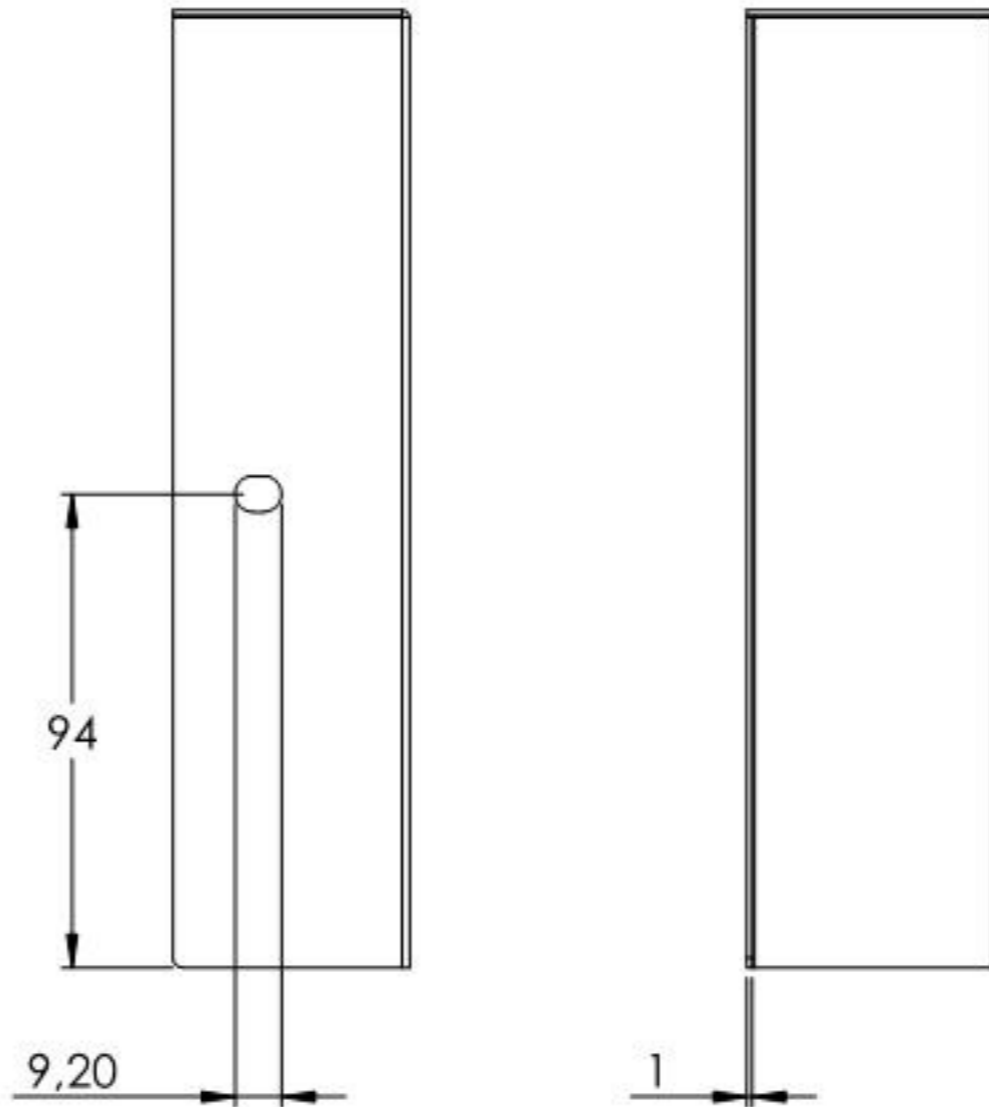
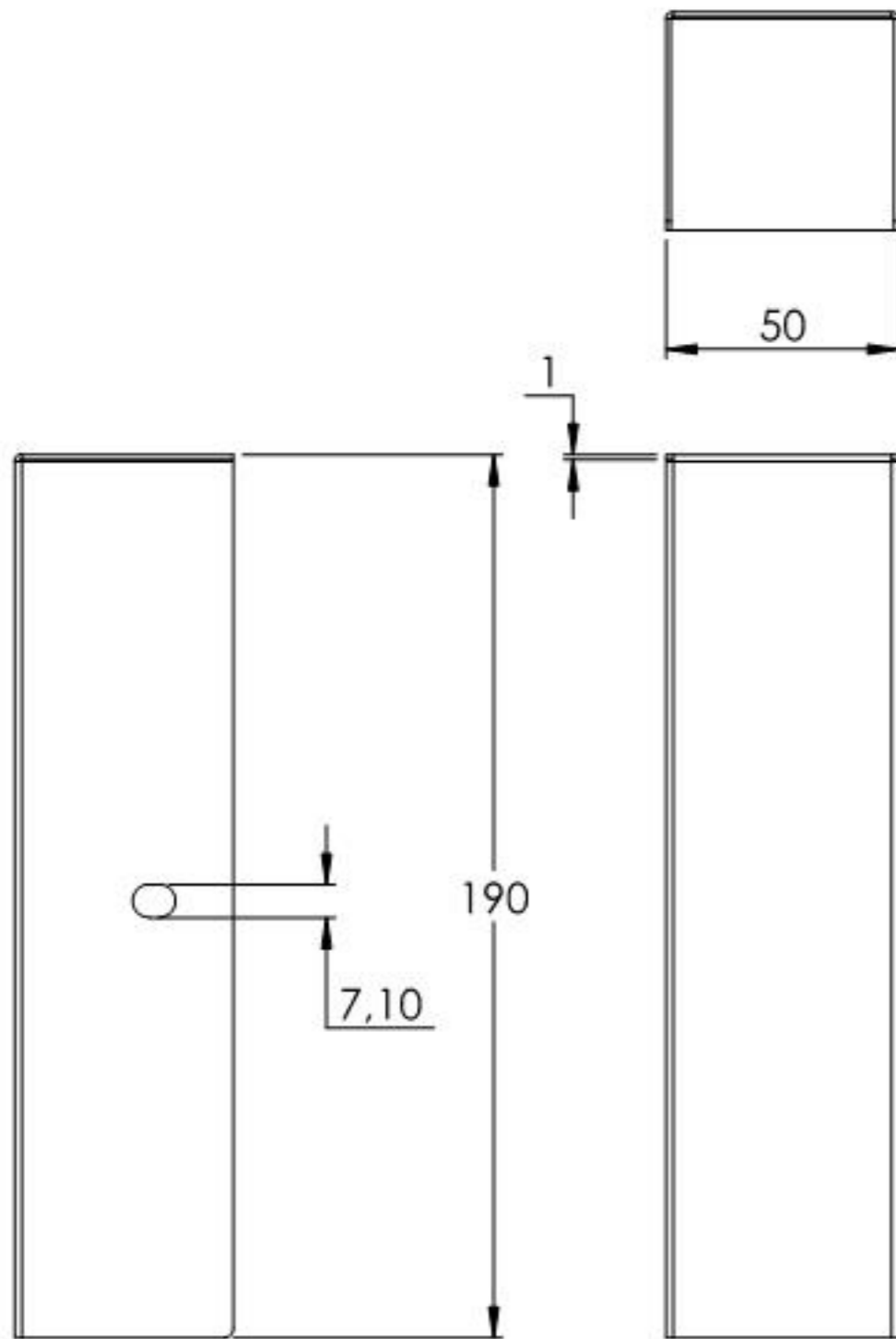
Maximales Torgewicht 200kg  
 \*Verstellbar um ca. 30mm



Name	Signatur	Datum	Artikelnummer	Oberfläche: Veränkt
Ch. Höfig	CH	23.01.2020	88.113872	
Werkstoff:				Blattformat
1.0037 (S235JR)				A4
Gewicht 1.327 kg		Maßstab: 1:5	Version: 1	Blatt 1 von 10



Name	Signatur	Datum	Artikelnummer	Oberfläche: Verzinkt
Ch. Höfig	CH	23.01.2020	88.113872	
Werkstoff:				Blattformat
1.0037 (S235JR)				A4
Gewicht 0,418 kg		Maßstab: 1:2	Version: 1	Blatt 2 von 10



Name	Signatur	Datum	Artikelnummer	Oberfläche: Verzinkt
Ch. Höfig	CH	23.01.2020	88.113872	
Werkstoff:				Blattformat
1.0037 (S235JR)				A4
Gewicht 0.225 kg		Maßstab: 1:2	Version: 1	Blatt 3 von 10