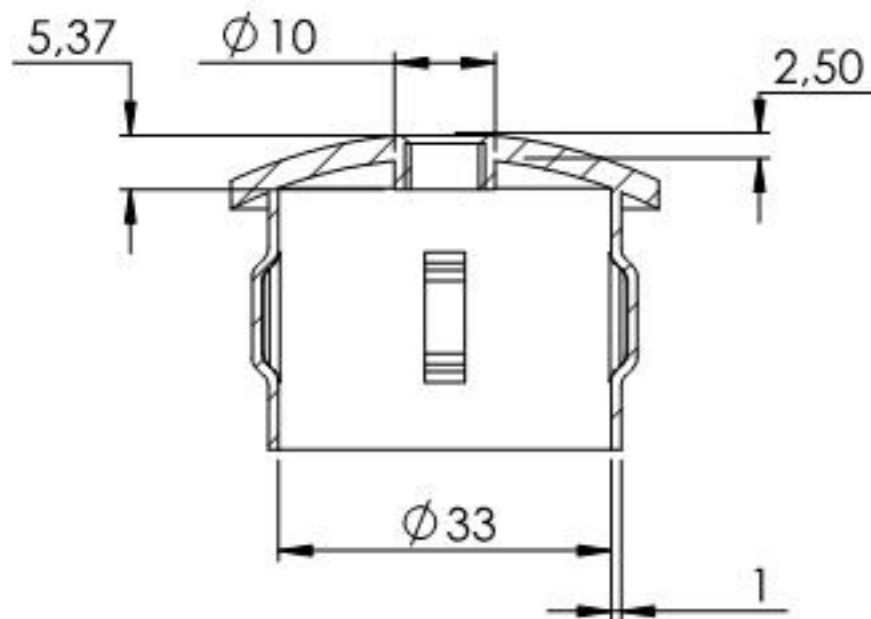
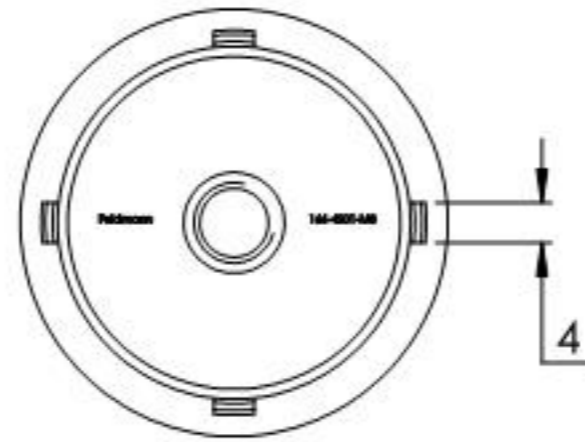
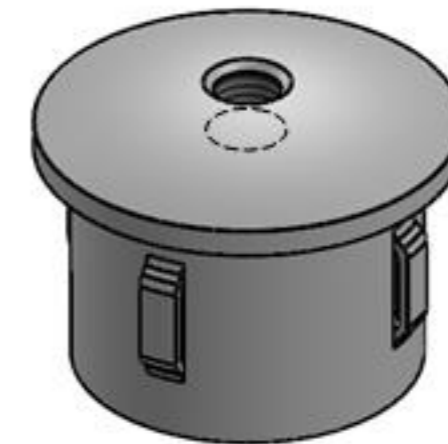
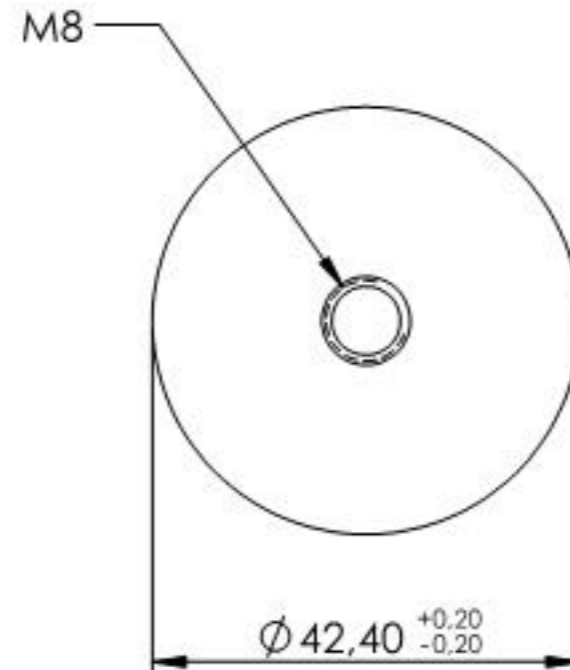
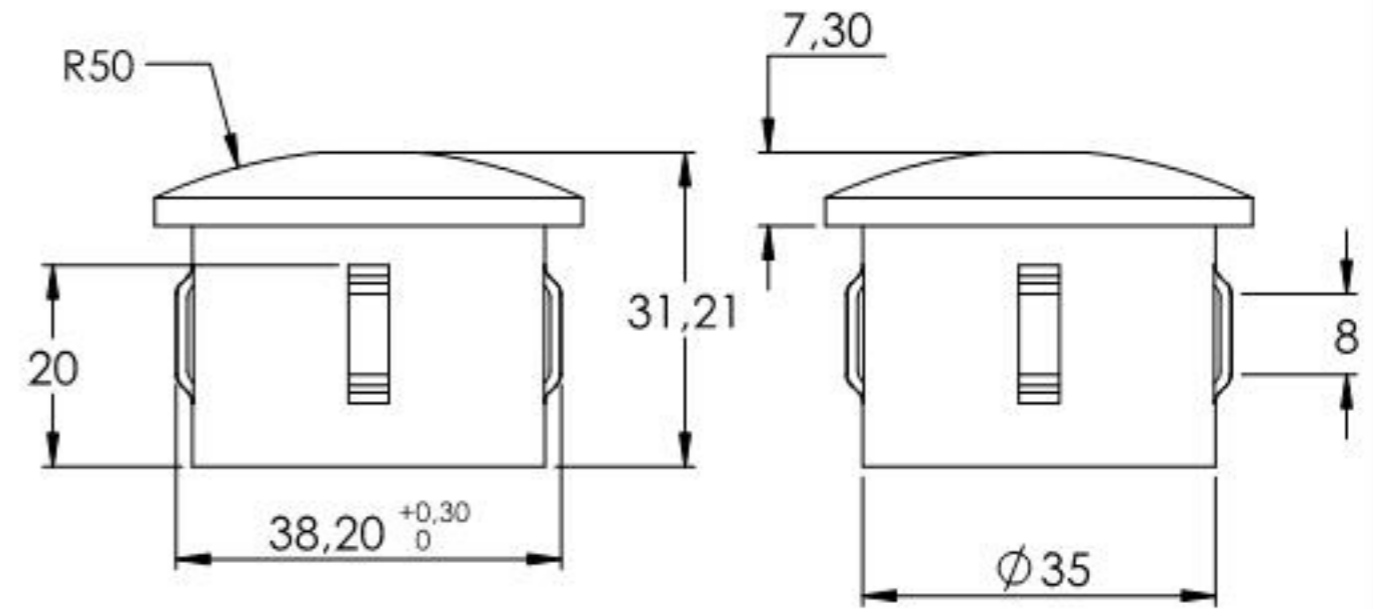
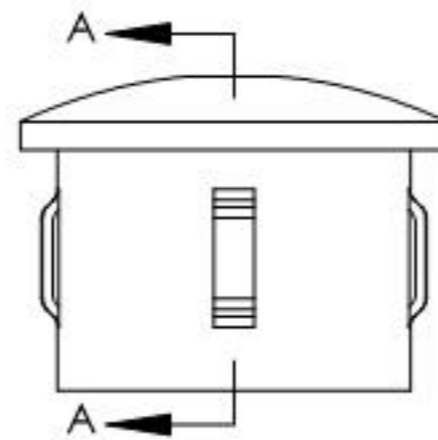


Für Wandstärke 2,5 - 2,9mm



SCHNITT A-A



Name	Signatur	Datum	Artikelnummer	Oberfläche: Roh
Ch. Höfig	CH	13.09.2019	130.2923.8	
Werkstoff:				Blattformat
1.0037 (S235JR)				A4
Gewicht 0,051 kg		Massstab: 1:1	Version: 1	Blatt 1 von 1