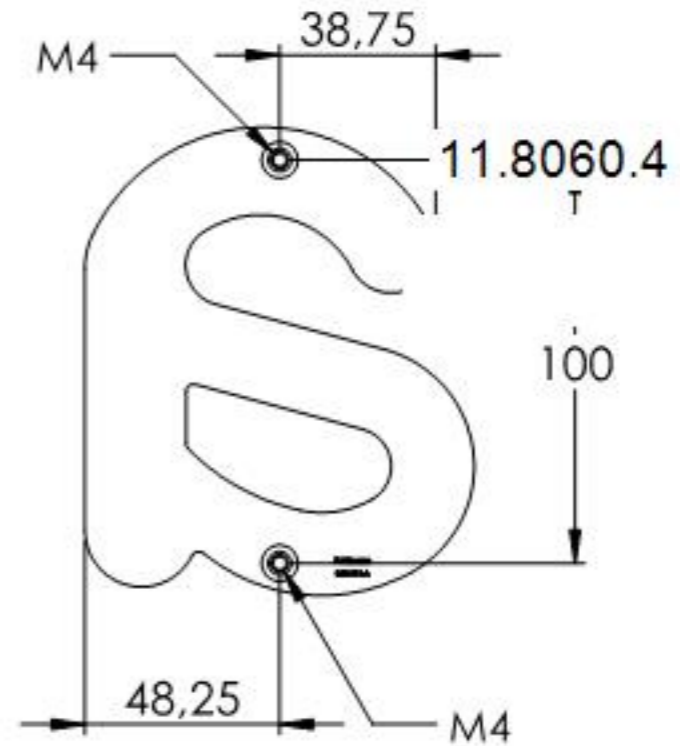
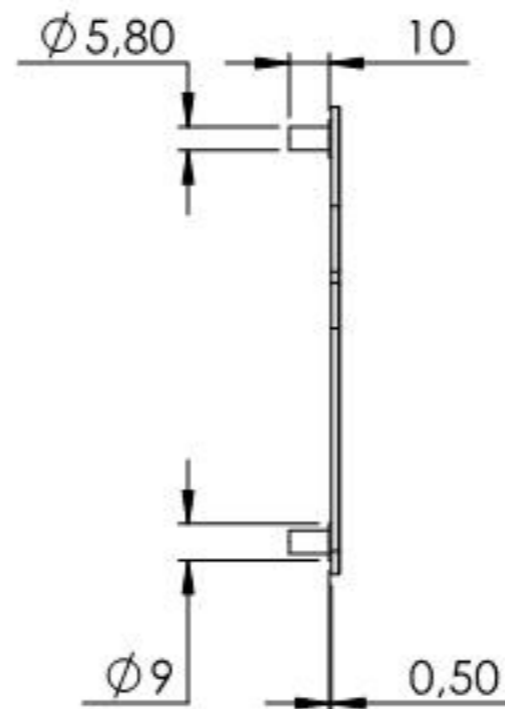
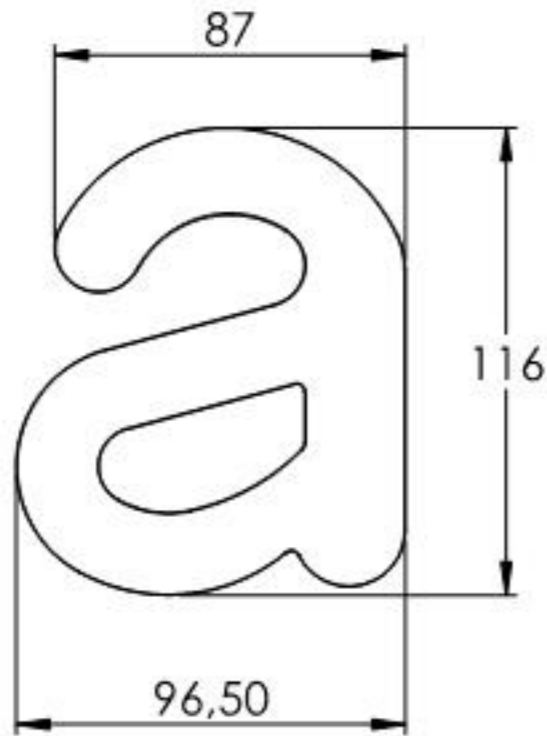
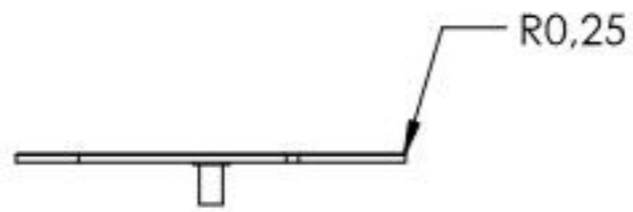
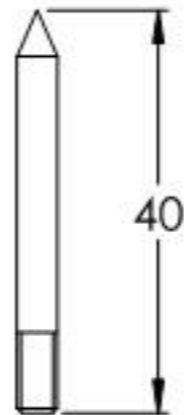
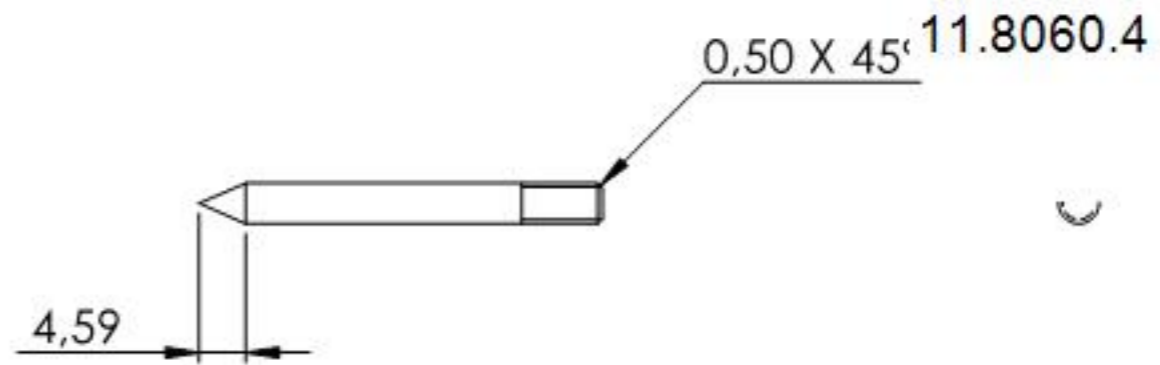
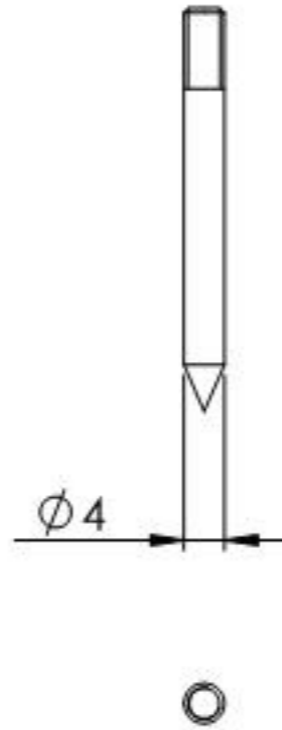
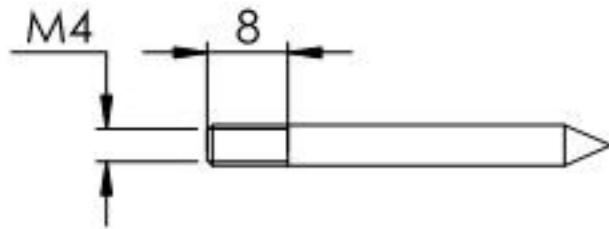


Name	Signatur	Datum	Artikelnummer	Oberfläche: Geschliffen Korn 240
Ch. Höfig	CH	23.04.2021	040-HN-A	
Werkstoff:		Hersteller		Blattformat
1.4301 (X5CrNi18-10)		 <small>EDLSTAHLE · ALUMINIUM · SCHWEIßEISEN</small>		A4
Gewicht 0,124 kg		Maßstab: 1:2,5	Version: 1	Blatt 1 von 6



Name	Signatur	Datum	Artikelnummer	Oberfläche: Geschliffen Korn 240
Ch. Höfig	CH	23.04.2021	040-HN-A Teil1	
Werkstoff: 1.4301 (X5CrNi18-10)		Hersteller  Feldmann EDLSTAHL-ALUMINIUM-SCHWEIßSTEIN		Blattformat A4
Gewicht 0,114 kg		Maßstab: 1:2,5	Version: 1	Blatt 2 von 6



Name	Signatur	Datum	Artikelnummer	Oberfläche: Roh
Ch. Höfig	CH	23.04.2021	040-HN-X Teil2	
Werkstoff:		Hersteller		Blattformat
1.4301 (X5CrNi18-10)		 <small>EDLSTAHL-ALUMINIUM-SCHWEIßEISEN</small>		A4
Gewicht 0.004 kg		Maßstab: 1:1	Version: 1	Blatt 3 von 6